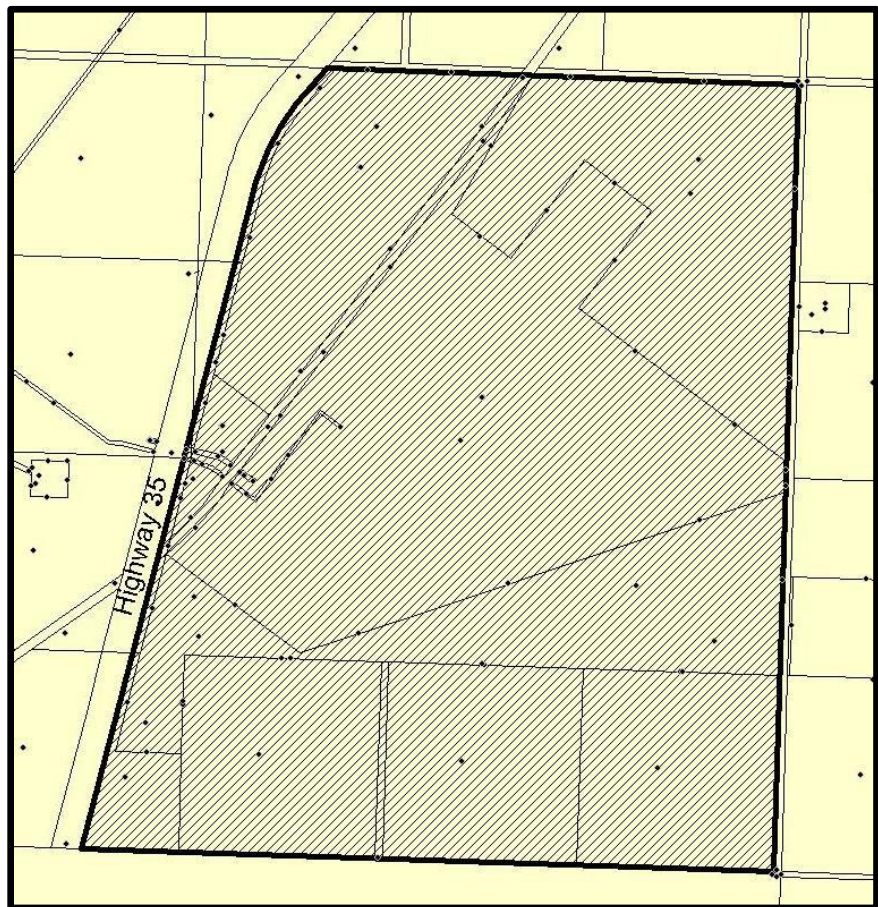
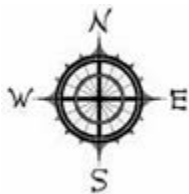


SECTIONS of 1 & 12, PT OF  
SECTIONS 2 & 11-109-20-W5M

I.D.P. Area



**Location:** *High Level Rural*

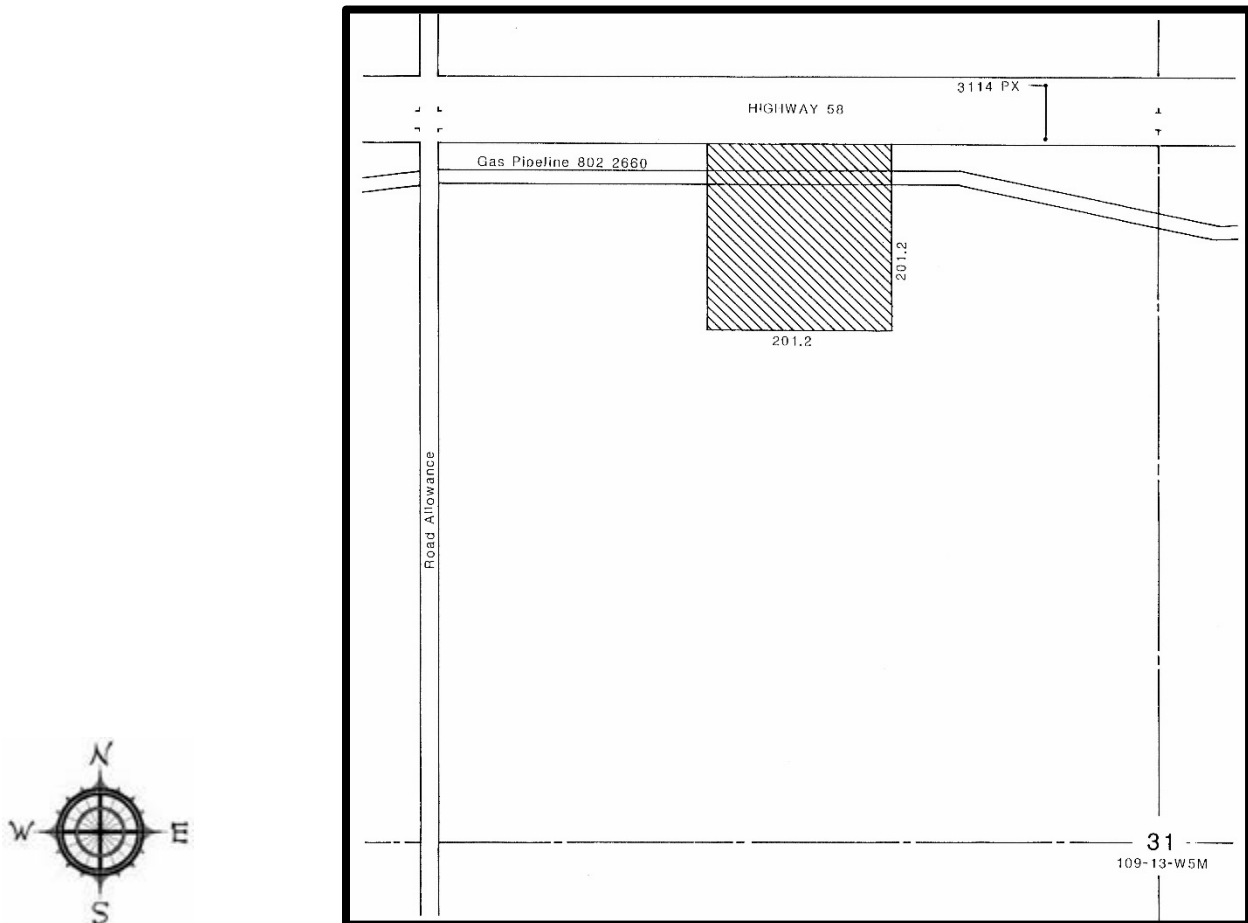
**Rezoned from:** *Forestry District "F"*

**To:** *Direct Control District 3 "DC3"*

*("DC3" changed to Direct Control "DC", "DC" changed to Direct Control 1 "DC1" by  
Bylaw 1066-17)*

Bylaw 176/99, June 1999

# PT of NW 31-109-13-W5M



**Location:** *Fort Vermilion Rural*

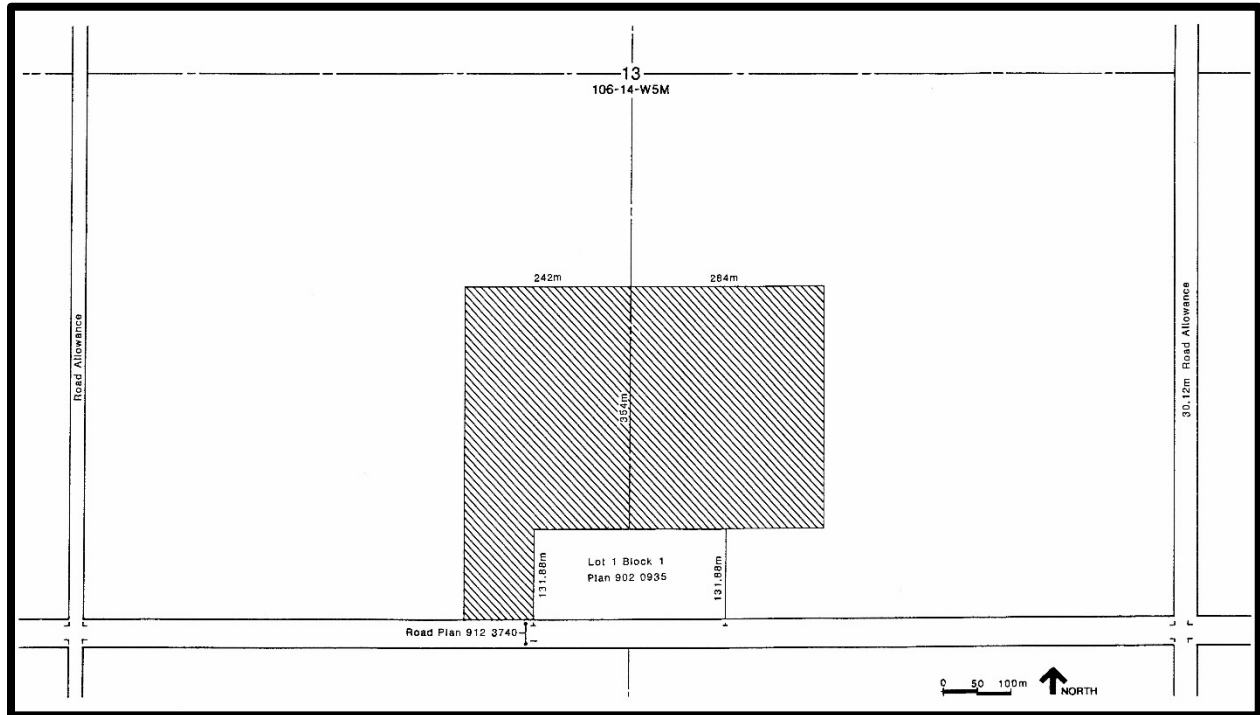
**Rezoned from:** *Agricultural District "A1"*

**To:** *Direct Control District "DC2"*

*("DC2" changed to Direct Control "DC", "DC" changed to Direct Control 1 "DC1" by Bylaw 1066-17)*

Bylaw 375/03, August 2003

# PT of SE 13-106-14-W5M



**Location:** *La Crete Rural*

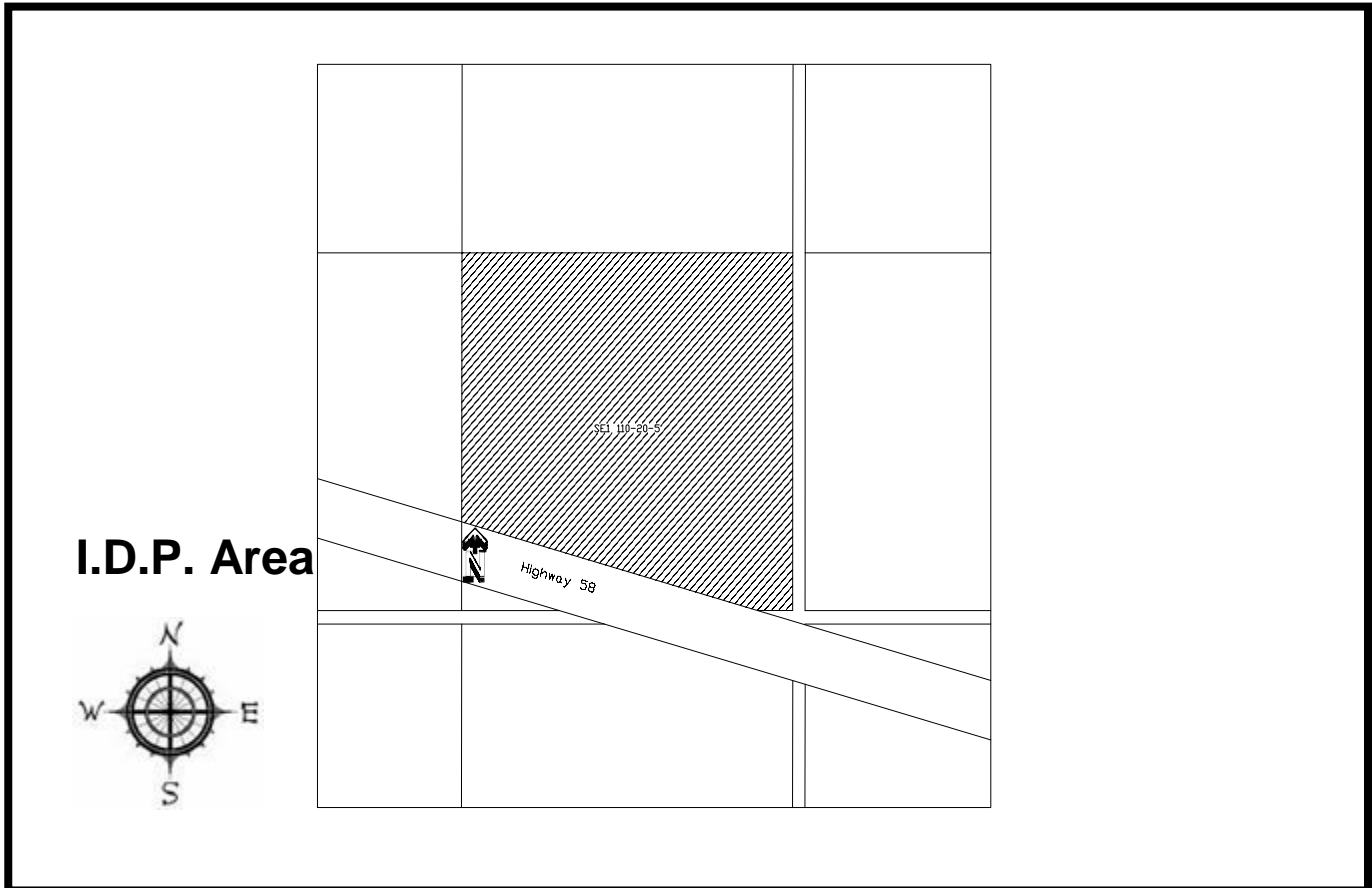
**Rezoned from:** *Agricultural District 1 "A1"*

**To:** *Direct Control District 3 "DC3"*

*("DC3" changed to Direct Control "DC", "DC" changed to Direct Control 1 "DC1" by Bylaw 1066-17)*

Bylaw 388/03, November 2003

# PT of SE 1-110-20-W5M



**Location:** *High Level Rural*

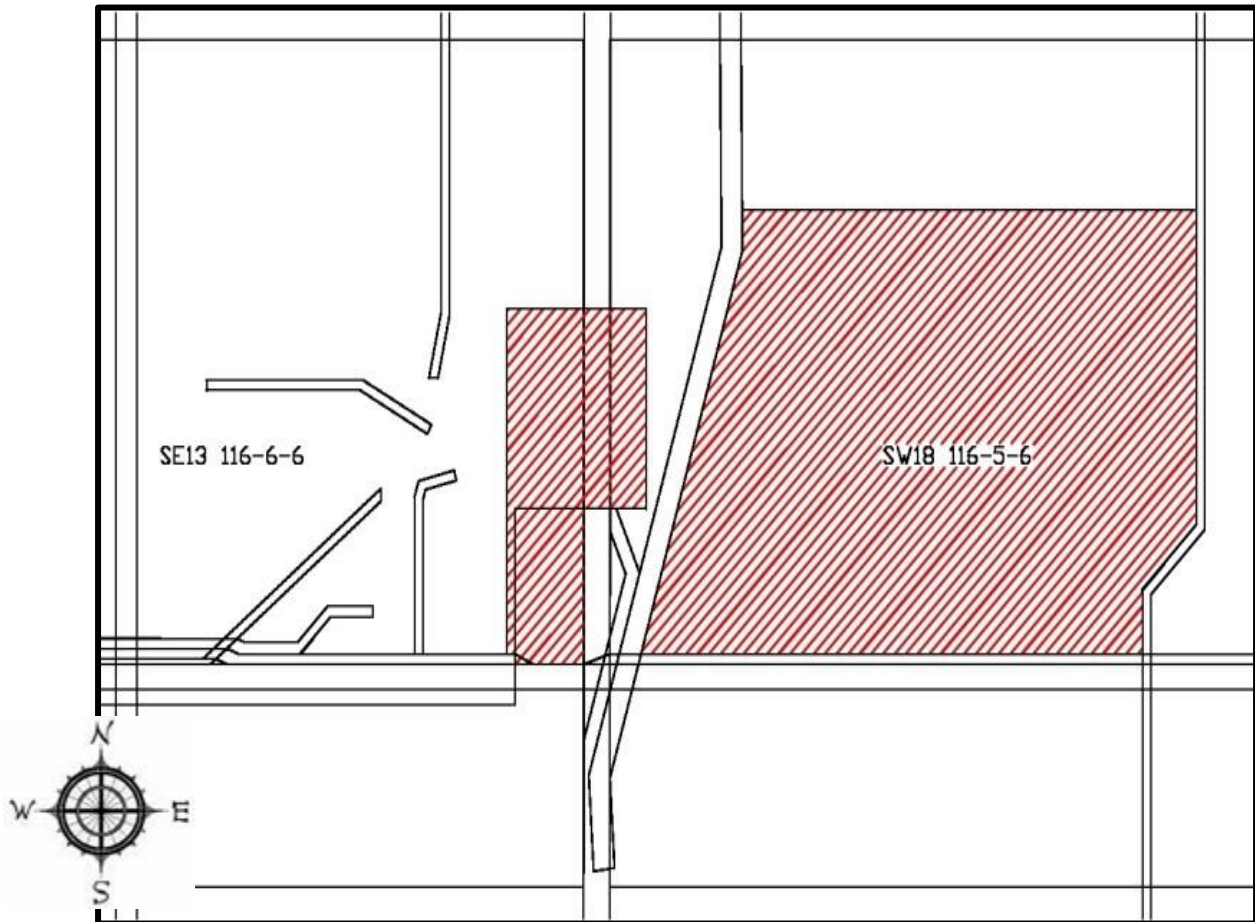
**Rezoned from:** *Agricultural District 1 "A1"*

**To:** *Direct Control District 3 "DC3"*

*("DC3" changed to Direct Control "DC", "DC" changed to Direct Control 1 "DC1" by Bylaw 1066-17)*

Bylaw 515/05, September 2005

PT of SW 18-116-5-W6M and  
PT of SE 13-116-6-W6M



**Location:** *Zama Lake Area*

**Rezoned from:** *Forestry District "F"*

**To:** *Direct Control District 3 "DC3"*

*("DC3" changed to Direct Control "DC", "DC" changed to Direct Control 1 "DC1" by  
Bylaw 1066-17)*

Bylaw 653/07, November 2007



# PT of SE 13-106-14-W5M



**Location:** *La Crete Rural*

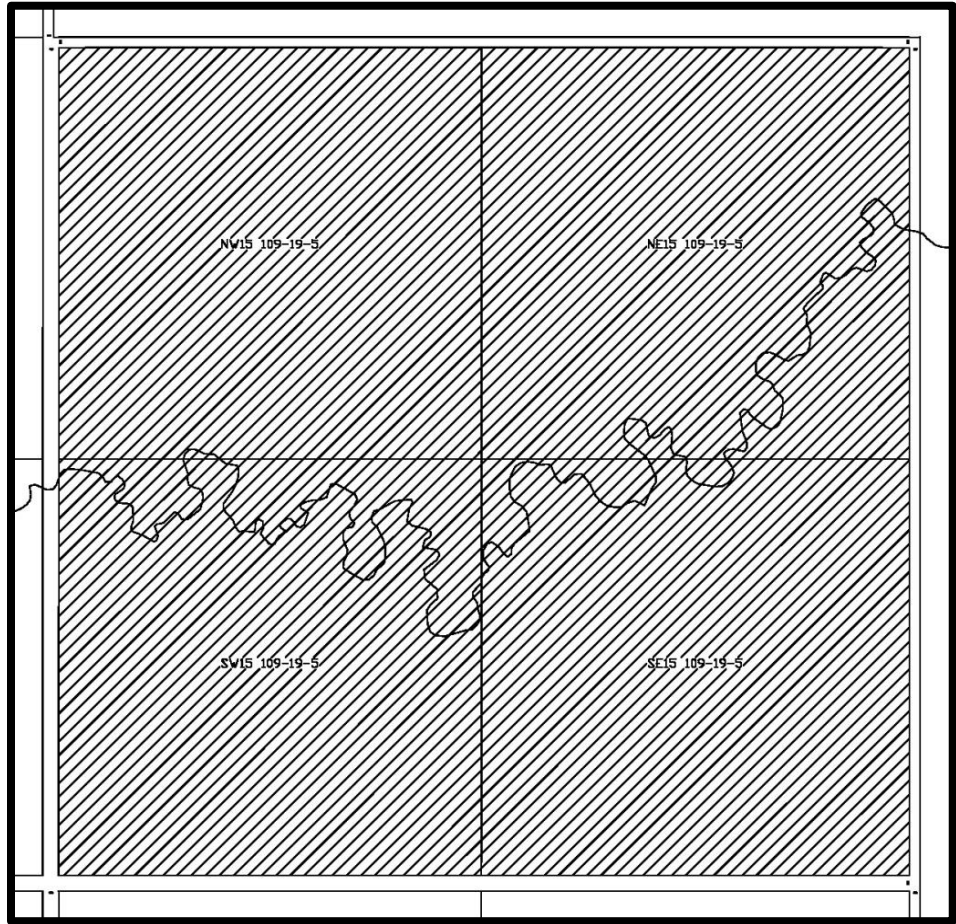
**Rezoned from:** *Agricultural District 1 "A1"*

**To:** *Direct Control District 1 "DC1"*

*("DC1" changed to Direct Control "DC", "DC" changed to Direct Control 1 "DC1" by Bylaw 1066-17)*

Bylaw 665/08, March 2008

# SECTION 15-109-19-W5M



**I.D.P. Area**



**Location:** *Rural High Level*

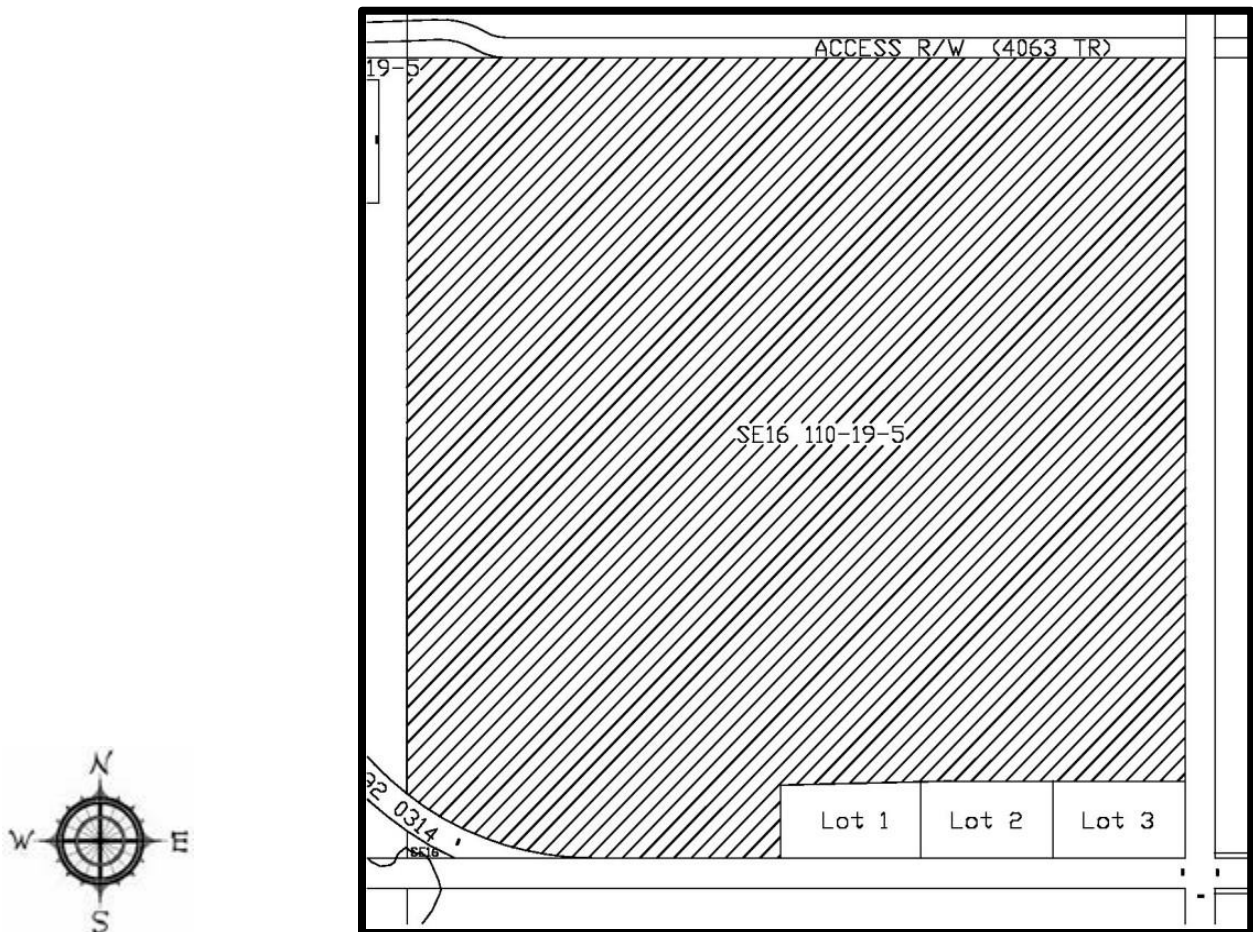
**Rezoned from:** *Agricultural District 1 "A1"*

**To:** *Residential Condominium District "RCD"*

*("RCD" changed to Direct Control 2 "DC2" by Bylaw 1066-17)*

Bylaw 674/08, June 2008

# PT of SE 16-110-29-W5M



**Location:** *High Level Rural*

**Rezoned from:** *Agricultural District 1 "A1"*

**To:** *Direct Control District 2 "DC2"*

*("DC2" changed to Direct Control "DC", "DC" changed to Direct Control 1 "DC1" by  
Bylaw 1066-17)*

Bylaw 719/09, June 2009